

Funded by:

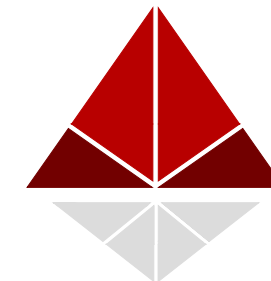


IN COLLABORATION WITH:

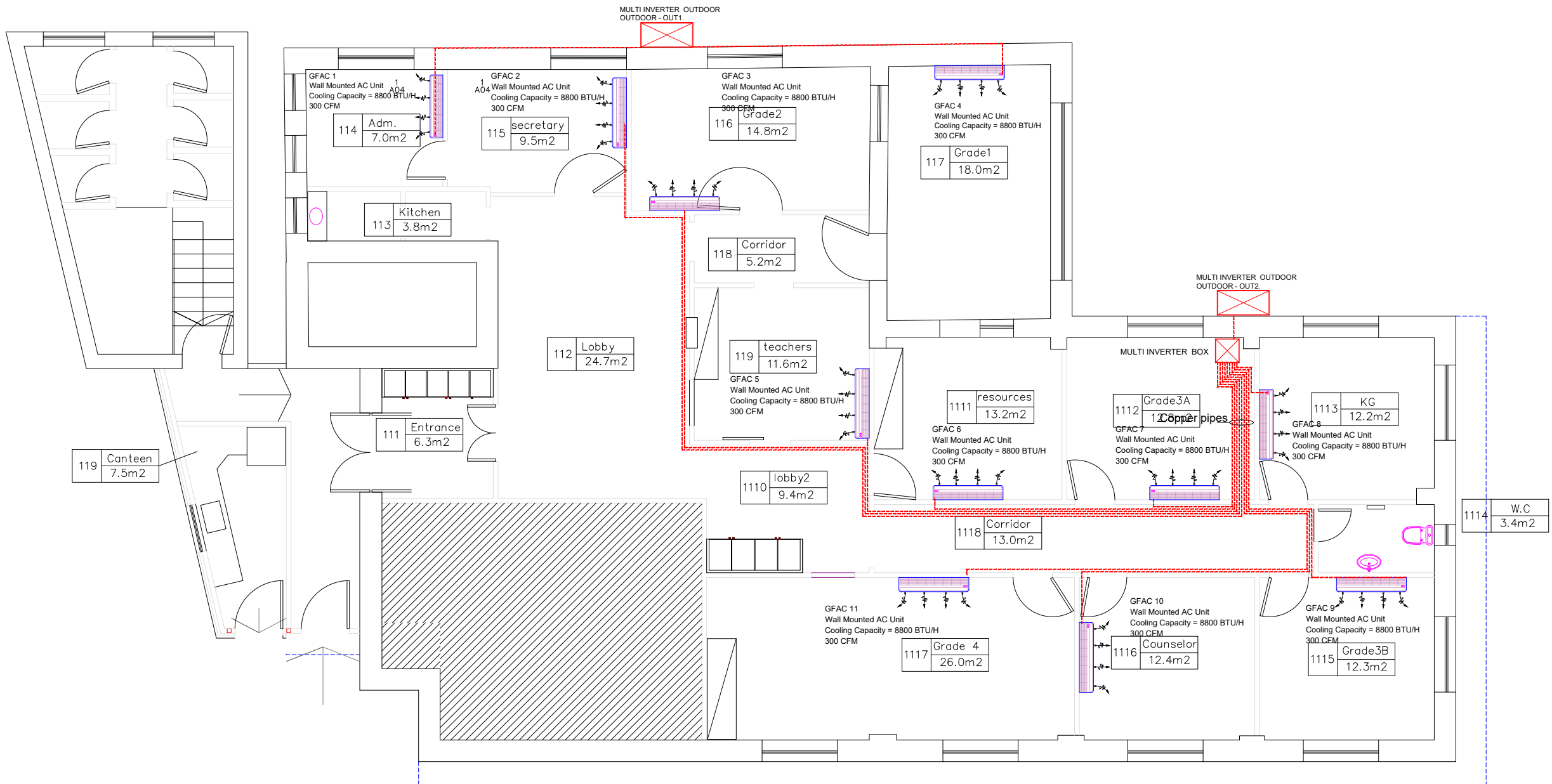


MECHANICAL DRAWINGS

Prepared By:



ATELIER ARLETTE
ARCHITECT & CONSULTANT
Beit Hanina - Jerusalem
tel. 025855785 -
mob.0525663968



Notes

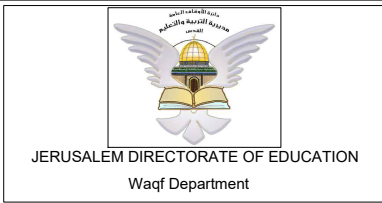
- (1) All Dimensions Are In Cm.
- (2) All Levels Are In Meter
- (3) Any Missing or Unclear Detail And All Fastening Systems For All Elements Shall be Approved by The Supervisor.

Legend:

- Drainage Pipe
- Suspended Drainage Pipe
- Floor Drain
- Floor Trap
- Storage Tank
- Wall Mounted AC Unit
- Suspended Copper Pipe
- Pex Pipe
- Water Collector

- RC CONCRETE FOR COLUMNS
- RC CONCRETE FOR WALLS
- CONCRETE
- STONE WALL
- HOLLOW BLOCKS
- CEMENT TILE
- Water Cooler
- TERRAZZO TILE
- R.C.L.:REN. CONCRETE LEVEL
- LOCAL MARBLE
- F.F.L.:FINISH FLOOR LEVEL
- Interlock
- S.L. : SEA LEVEL

REVISIONS		
NO.	DRAWINGS	DATE
(1)		
(2)		
(3)		



Funded by:

Belgium other donors

IN COLLABORATION WITH:

Enabel

Project :
Al-Dawha school
Rehabilitation

School:
AL-Doha' School
Jerusalem

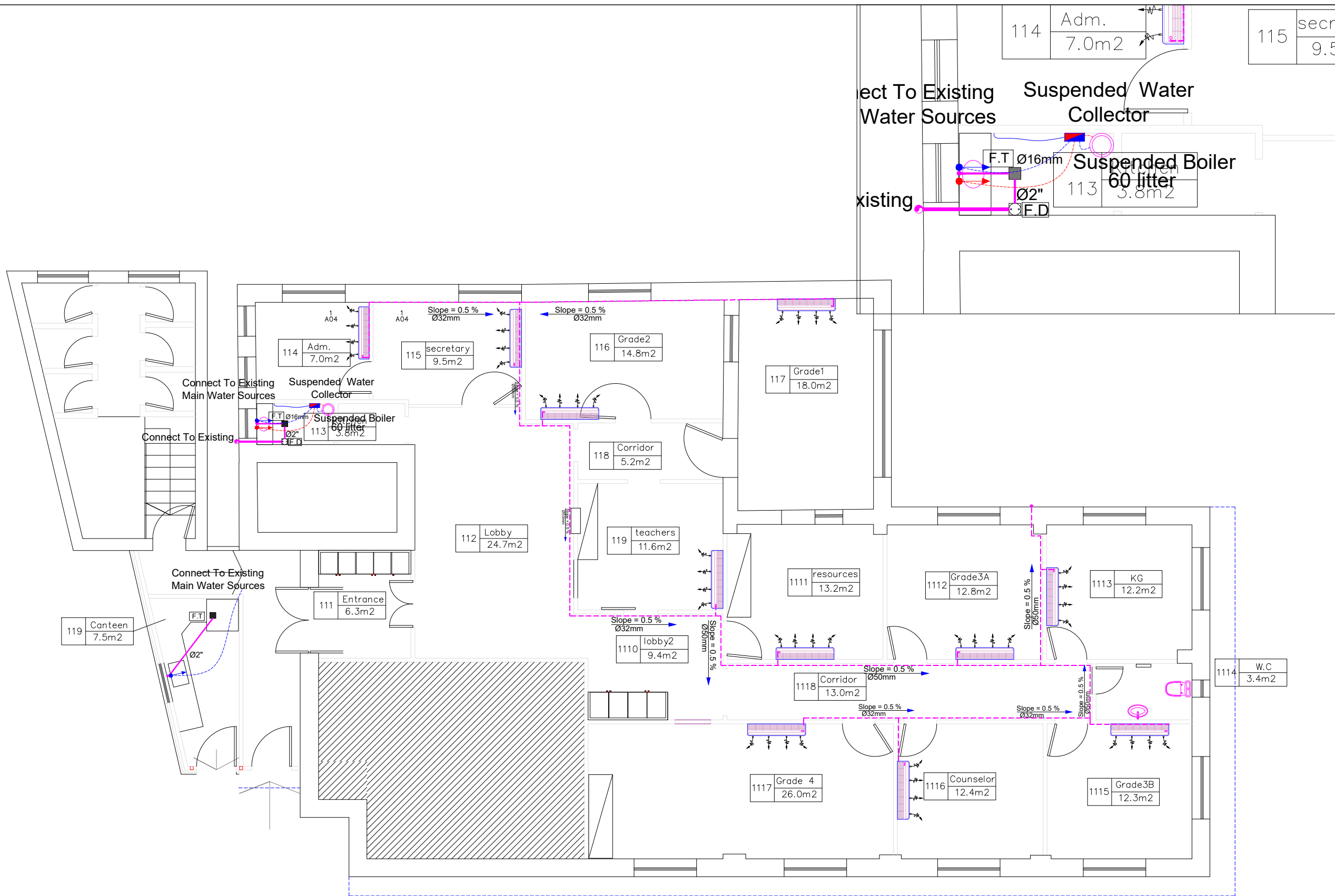
Tender No.:

Designed by:

ATELIER ARLETTE
ARCHITECT & CONSULTANT

Beit Harina - Jerusalem Tel. 025855785 - mob.0525663968
archletty@yahoo.com Fax: 0737251495

Drawing Title	Ground floor AC System	Date: 04.2020
		Scale: 1/100
Designed by: NAME Atelier Arlette Team	Zoom Area: 1/50	Drawing No:
Checked by: NAME Atelier Arlette Team		M 003
Approved by: NAME Atelier Arlette Team		
Coordinate Manager: NAME		



Notes

- (1) All Dimensions Are In Cm.
- (2) All Levels Are In Meter
- (3) Any Missing or Unclear Detail And All Fastening Systems For All Elements Shall be Approved by The Supervisor.

Legend:

- Drainage Pipe
- Suspended Drainage Pipe
- Floor Drain
- Floor Trap
- Storage Tank
- Wall Mounted AC Unit
- Suspended Copper Pipe
- Pex Pipe
- Water Collector

- RC CONCRETE FOR COLUMNS
- RC CONCRETE FOR WALLS
- CONCRETE
- STONE WALL
- HOLLOW BLOCKS
- CEMENT TILE
- TERRAZZO TILE
- LOCAL MARBLE
- Interlock
- Water Cooler
- R.C.L.:REN. CONCRETE LEVEL
- F.F.L.:FINISH FLOOR LEVEL
- S.L. : SEA LEVEL

REVISIONS		
NO.	DRAWINGS	DATE
(1)		
(2)		
(3)		



Funded by:

IN COLLABORATION WITH:

Project : Al-Dawha school rehabilitation

School: AL-Doha School Jerusalem

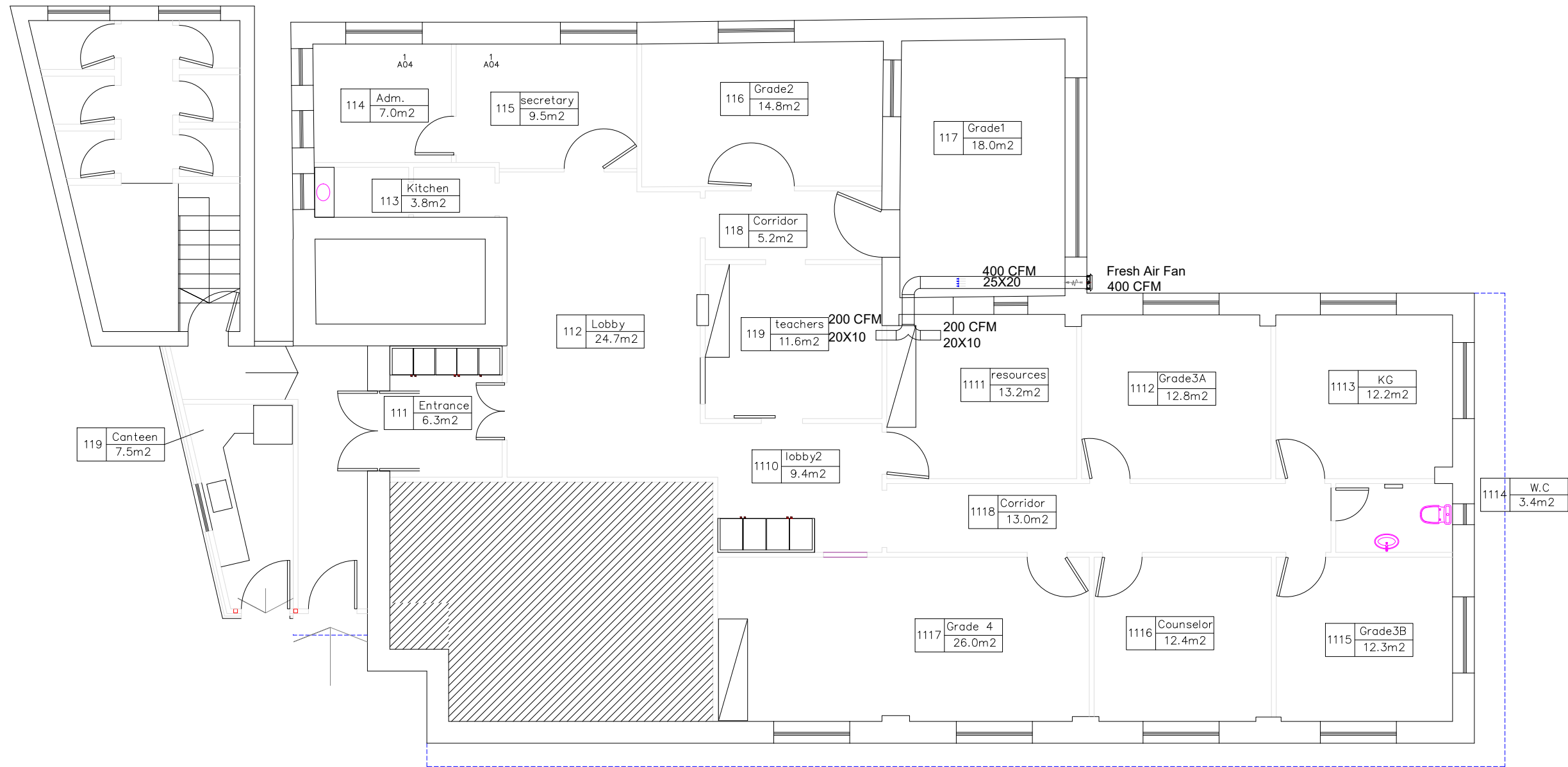
Tender No.:

Designed by:

ATELIER ARLETTE ARCHITECT & CONSULTANT

Beit Hanina - Jerusalem Tel. 025855785 - mob.0525663968
archletty@yahoo.com Fax: 0737251495

Drawing Title	Ground floor Drainage And Water System	Date: 04.2020
		Scale: 1/100
Designed by:	NAME Atelier Arlette Team	Zoom Area Scale: 1/50
Checked by:	NAME Atelier Arlette Team	Drawing No: M 001
Approved by:	NAME Atelier Arlette Team	
Coordinate Manager:	NAME	



Notes

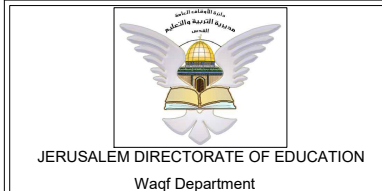
- (1) All Dimensions Are In Cm.
- (2) All Levels Are In Meter
- (3) Any Missing or Unclear Detail And All Fastening Systems For All Elements Shall be Approved by The Supervisor.

Legend:

- Drainage Pipe
- Suspended Drainage Pipe
- Floor Drain
- Floor Trap
- Storage Tank
- Wall Mounted AC Unit
- Suspended Copper Pipe
- Pex Pipe
- Water Collector

- RC CONCRETE FOR COLUMNS
- RC CONCRETE FOR WALLS
- CONCRETE
- STONE WALL
- HOLLOW BLOCKS
- CEMENT TILE
- TERRAZZO TILE
- LOCAL MARBLE
- Interlock
- Water Cooler
- R.C.L.:REN. CONCRETE LEVEL
- F.F.L.:FINISH FLOOR LEVEL
- S.L. : SEA LEVEL

REVISIONS		
NO.	DRAWINGS	DATE
(1)		
(2)		
(3)		



Funded by:

IN COLLABORATION WITH:

Project : Al-Dawha school rehabilitation
Lot

School: AL-Doha' School
Jerusalem

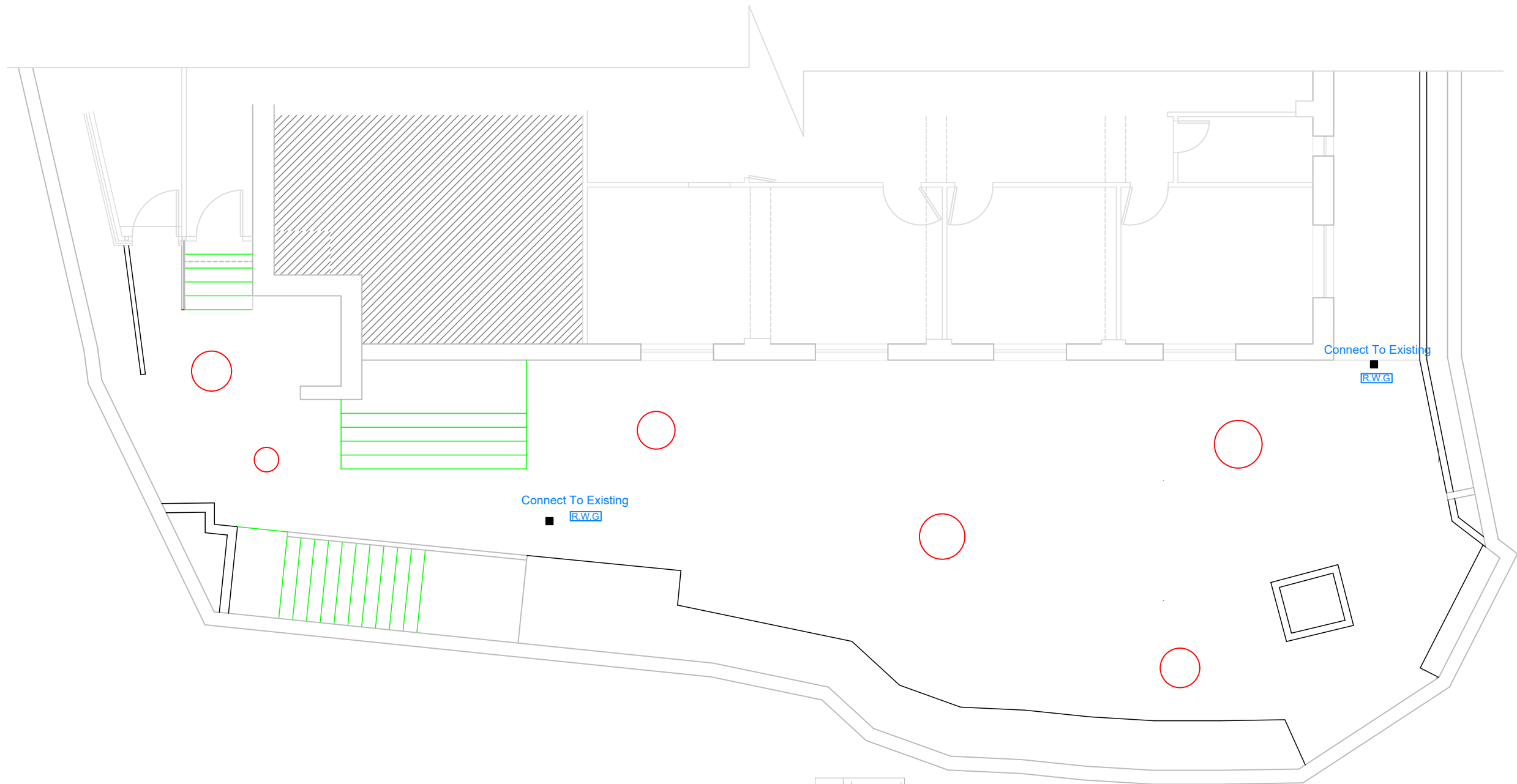
Tender No.:

Designed by:

ATELIER ARLETTE
ARCHITECT & CONSULTANT

Beit Hanina - Jerusalem Tel. 025855785 - mob.0525663968
archletty@yahoo.com Fax: 0737251495

Drawing Title	Ground floor Ventilation System	Date: 04.2020
Designed by:	NAME Atelier Arlette Team	Scale: 1/100
Checked by:	NAME Atelier Arlette Team	Zoom Area Scale: 1/50
Approved by:	NAME Atelier Arlette Team	Drawing No: M 002
Coordinate Manager:	NAME	



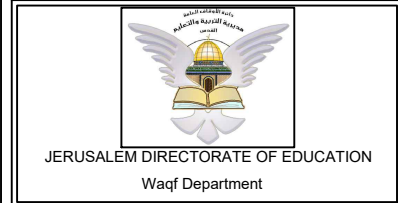
P1 playground
161.6m2

Notes
 (1) All Dimensions Are In Cm.
 (2) All Levels Are In Meter
 (3) Any Missing or Unclear Detail And All Fastening Systems For All Elements Shall be Approved by The Supervisor.

- Legend:**
- Drainage Pipe
 - Suspended Drainage Pipe
 - Floor Drain
 - Floor Trap
 - Storage Tank
 - Wall Mounted AC Unit
 - Suspended Copper Pipe
 - Pex Pipe
 - Water Collector

- RC CONCRETE FOR COLUMNS
- RC CONCRETE FOR WALLS
- CONCRETE
- STONE WALL
- HOLLOW BLOCKS
- CEMENT TILE
- TERRAZZO TILE
- LOCAL MARBLE
- Interlock
- Water Cooler
- R.C.L.:REN. CONCRETE LEVEL
- F.F.L.:FINISH FLOOR LEVEL
- S.L. : SEA LEVEL

REVISIONS		
NO.	DRAWINGS	DATE
(1)		
(2)		
(3)		



Funded by:

IN COLLABORATION WITH:

Project : Al-Dawha school rehabilitation

School: AL-Doha' School Jerusalem

Tender No.:

Designed by:

ATELIER ARLETTE
ARCHITECT & CONSULTANT

Beit Hanina - Jerusalem Tel. 025855785 - mob.0525663968
archletty@yahoo.com Fax: 0737251495

Drawing Title	PLAY GROUND Rain Water System	Date: 04.2020 Scale: 1/100
Designed by:	NAME Ateller Arlette Team	Zoom Area: 1/50
Checked by:	NAME Ateller Arlette Team	Drawing No:
Approved by:	NAME Ateller Arlette Team	M 004
Coordinate Manager:	NAME	